

Release Notes - Configura CET Designer

Version 1.3

Here is a listing of the main features and improvements in CET Designer 1.3.

New Features

CET Designer with Hardware Certificate

Now it is possible to use a hardware certificate (a HASP hardware key for the USB port) instead of the regular software license. Using a hardware certificate, the account is tied to the hardware key instead of a specific computer. This benefits you as a user since you can bring your hardware key (i.e. your license) with you to other computers.

Safer Download of Extensions

CET Designer now supports limited and more secure download of extensions in the Extension Manager. This means that when you download some extensions you will be asked to enter a password.

New Measuring Tool

Now there is a new measuring tool available in the 2D view toolbar. Using the ruler, you can easily measure the distance between objects in the drawing area.



You find the ruler feature in the 2D view toolbar

Improvement and changes

Information in multiple languages

CET Designer now has multiple language support for extensions. This means that extensions can contain information (introduction texts, license ordering information etc.) in different languages.

Apart from the new features above, our focus has been to continually enhance the quality of existing functionality.

Version 1.2

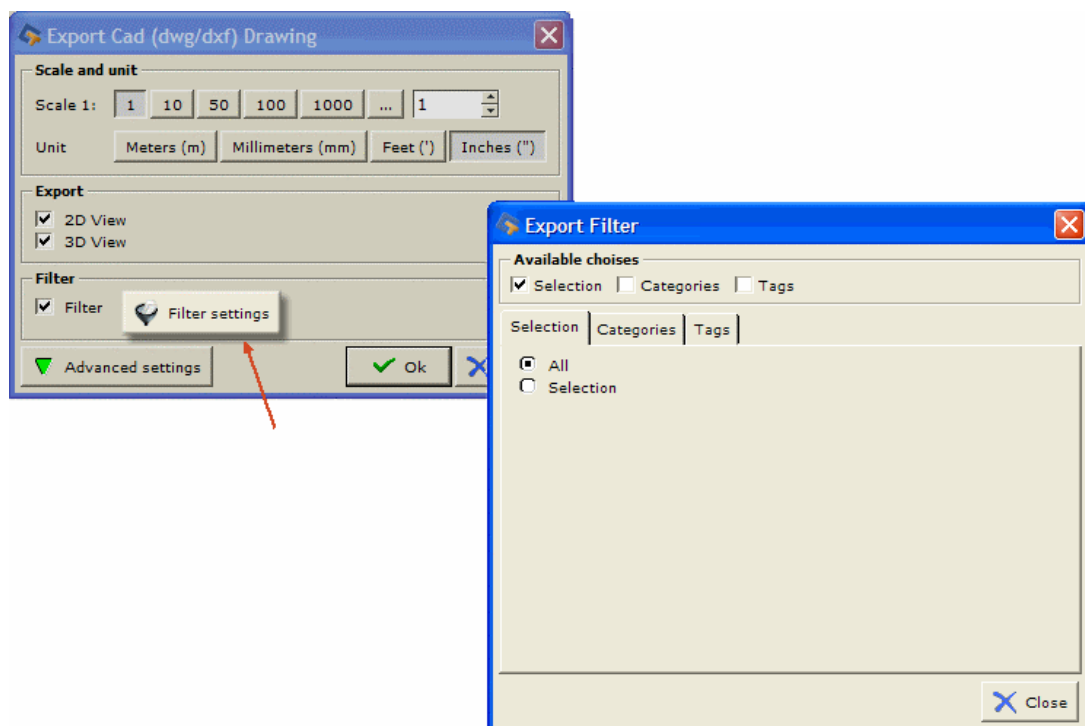
Here is a listing of the main features and improvements that is new in version 1.2.

New Features

Filter Settings in Cad Export

Several new options have been added in the program that enables you to filter information when exporting drawings to the Cad formats dwg or dxf.

In the “Export Cad” dialog you will find a new button called “Filter settings” (see Figure below). The new options allow you to specify what part of the drawing that you would like to export. For example if you have a drawing of an office building, you can choose to export just one of the rooms.

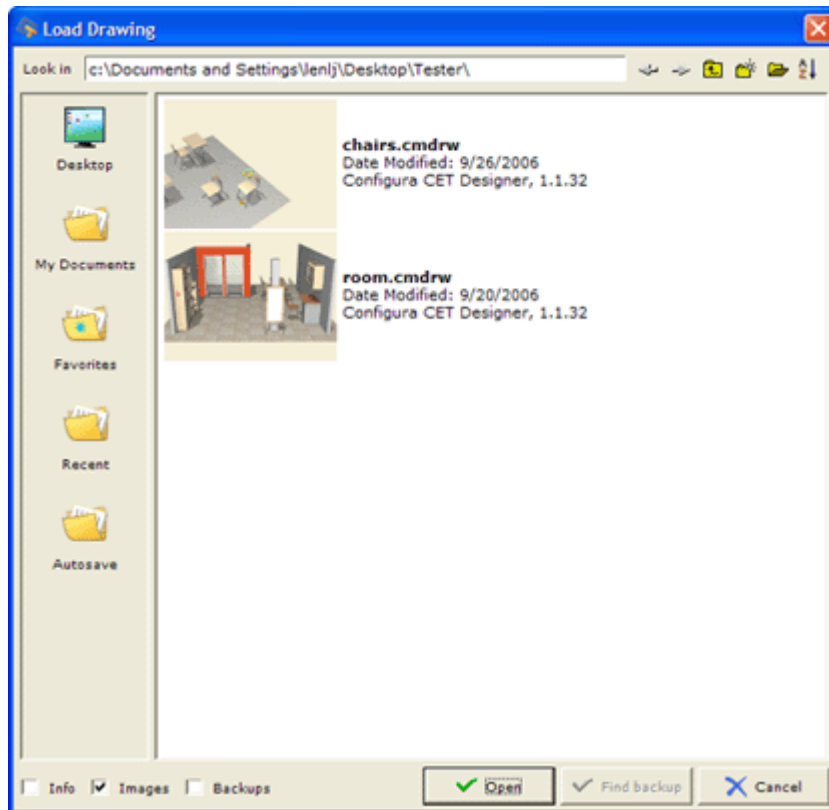


The “Export Cad” dialog box (to the left) and the dialog box that opens when clicking the “Filter settings” button (to the right).

New Open Dialog

The “Open dialog” box has a completely new look (see Figure below). Now it is easier for you to open files from “My Documents”, to find back up files, and much more.

The new features allow you to sort your files by date or by name, to show the files in a list or as pictures, it is all up to you.



The new "Open" dialog box

Possibility to Import AutoCad 2007 files

Now it is possible to import AutoCad 2007 files (R21). Go to the "File" menu and select "Import Cad (dwg/dxf) Drawings". Browse to desired file, select the desired settings, and click "Ok".

Improved Copy/Paste Function

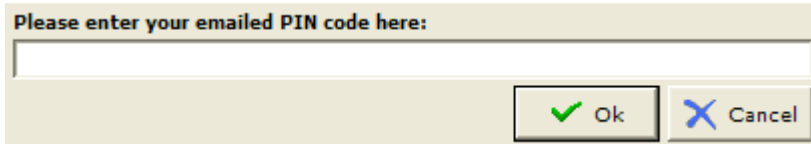
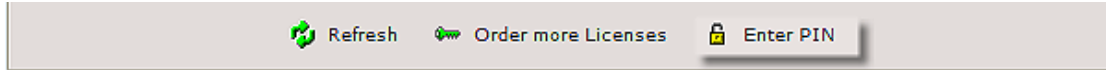
A new feature has been added that makes it easier for you when working with the "Copy and Paste" commands. When you have copied or cut a component and wish to paste it multiple times, you can right-click and select "Repeat". Now you can simply continue clicking the drawing area repeated times to place the copied component and no longer need to choose "Paste" every time you wish to paste.

Choose the Number of Backup Files

While you are working with your drawing, the program automatically saves your drawing for safety's sake. Now you have the possibility to decide the number of auto-backup files and auto-saved files per drawing. Go to the "Security" tab in the "Control Panel" to find this option.

PIN Code

There is now a new way to receive CET certificates after you have ordered a license. Normally, the certificate is attached with the response e-mail from the server. If your license certificate was not attached, you can also find the certificate in the "Extension Manager". Go to "My Licenses" and click the "Enter PIN" button and enter the pin code that you have received in the e-mail.



Click the "Enter PIN" button in the "Extension Manager" and enter the PIN code.

Improvements and Changes

Print Reports Dialog

The "Print" function has been improved. The appearance and the basic structure are now the same, regardless of the Extension installed.

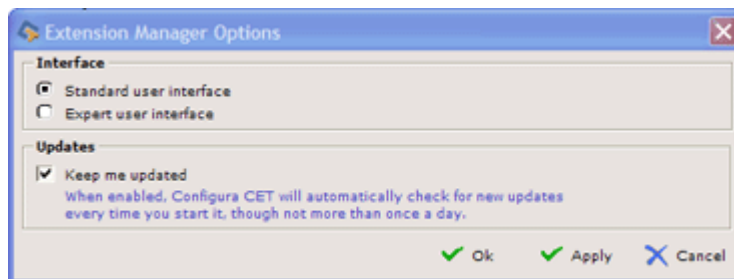
New options have been added under the "Report settings" tab, which allow you to have more control of the information in the output.

Improved Behavior in Green Input Boxes

Now the green input boxes follow the standard behavior when entering information. For example, when you wish to enter the measurements of a wall, double-click in the fields in the green input box, the present measurement will be marked, and enter the new wall measurements.

Keep Me Updated

The "Extension Manager Options"  in the "Extension manager" has been updated. A new check box called "Updates" (marked by default) means that when enabled, Configura CET will automatically check for new updates every time you start the program (see Figure below).



A new check box called "Updates" in the "Extension Manager Options" dialog.

More Improvements...

- “Dwg/dxf zero point” is now lockable. Select the zero-point, right-click and choose “Lock position/Unlock position”. Locked means it is not possible to move the zero point.
- “Image component” now show 4-bit and 8-bit bmp:s (and since before 16-bit, 24-bit bitmaps and 32-bit bitmaps).
- “Image component” can now show jpeg files.
- Zoom using mouse wheel in 2D is a lot faster when viewing large drawings.

To get more detailed information, go to the Help file in the program or simply click the link below:

http://www.cet-extensions.net/help/Configura_CET_Designer_Help.htm

Version 1.1.30

New features

Creating Tab Configurations

The new feature “Component Tabs Configurator” is accessed from the top of the component tab row (see icon to the right on Figure 1 below). This feature allows you to control which component tabs you would like to have visible. In the dialog that opens when selecting this option, you can create and save your named configurations.

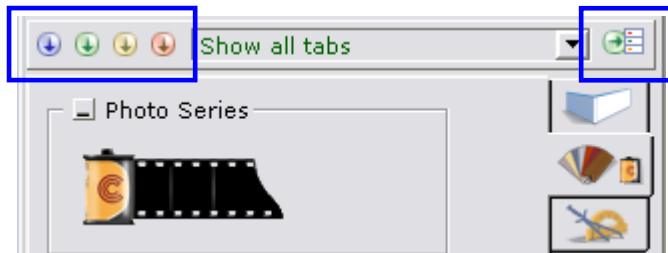
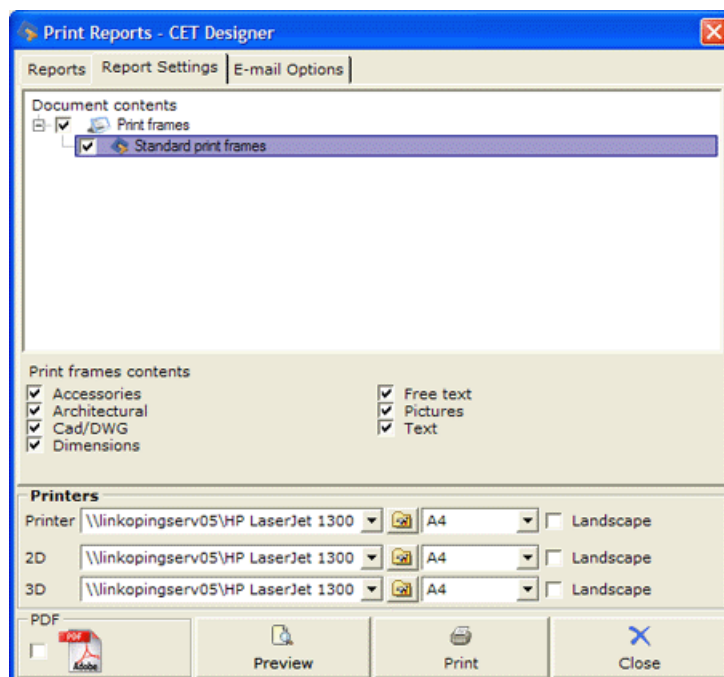


Figure 1

You may also link your configurations to three quick buttons located to the left above the components area (see Figure 1 above). More information can be found in the *CET Designer Help*.

New Print Handling

The “Print handling” in CET Designer has been completely rewritten, in order to provide a more general base for all Extensions. However, the functionality is not complete yet and future updates will be made to the “Print function”.



Note to Haworth Canvas Extension users: Should you experience any problems with the new print system, it is still possible to use the old print system.

Improvements and Changes

- From this version and on, you will be able to upgrade to new versions of the CET Designer without having to perform a Windows MSI installation. Administrative rights are thus no longer required. You update your CET Designer from the “Extension Manager”, in the same way that you do with Extensions.
- New checkbox-style selection in “Get Extensions” that allows more freedom. For instance it is now always possible to select *all* available Extensions and download them all at once.

Version 1.0.14

Improvements and Changes

General

The language change is now working. The application is now rebuilding itself correctly and the views remain functional.

Extensions Manager

- 30 days before a trial period or a license is about to expire, you will be notified. This is done when CET starts up, but only once a day.
- There is now a "License Ordering Wizard" that can help you ordering new licenses and renewing your old. It presents all Extensions that require a license and tells you how long you have left before your existing licenses will expire. You can order multiple licenses at once using this feature. The wizard will appear automatically well before any licenses will expire, but you may also start it manually from "My Licenses" by clicking on the button "Order more licenses".
- The user can no longer avoid restarting CET by uninstalling an Extension before updating it to a new version. This error could lead to instability.
- Extension and package versions are now verified to be compatible before download and install of Extensions. Wasn't done at all earlier.
- Update of an Extension that have other Extensions depending on it will now result in that all the affected Extensions will require a restart.
- Turning off an Extension will also turn off all Extensions that are depending on it. Similarly, turning on an Extension will also turn on all Extensions that are required for it to run.
- The "Extension Manager" window will now resize a little better.